



MATERIAL SAFETY DATA SHEET

Manufacturer/information service:

ZHEJIANG RAYFULL CHEMICALS CO.,LTD

ADD: NO.52 PUCHANG ROAD, PUZHOU INDUSTRIAL PARK, LONGWAN DISTRICT,
WENZHOU ZHEJIANG P.R. CHINA

Tel: +86-577-88905587

Fax: +86-577-88905567

Email: info@rayfull.com

sales@rayfull.com

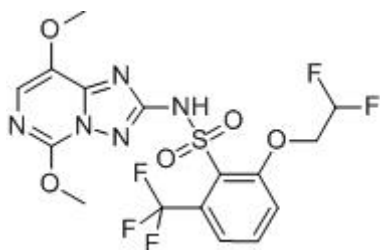
1. Chemical Product Identification

Product Name: Penoxsulam 2.5% OF

Molecular Formula: C₁₆H₁₄F₅N₅O₅S

Molecular Weight: 483.37

Structural Formula:



Chemical Name: 2-(2,2-difluoroethoxy)-N-(5,8-dimethoxy-[1,2,4]triazolo[1,5-c]pyrimidin-2-yl)-6-(trifluoromethyl)benzenesulfonamide

2. Composition / Information On Ingredients

Composition	CAS No.	Content (w/v)
Penoxsulam	219714-96-2	2.5%
Others ingredients	---	97.5%

3. Hazards Identification

May cause eye irritation. Toxid to aquatic organisms and avian.

4. First Aid Measures



If in eyes, rinse immediately with plenty of water, also under the eyelids, for at least 15min.

Remove contact lenses. Immediate medical attention is required.

If skin contact, take off all contaminated clothing. Wash off immediately with plenty of water for 15-20min. If skin irritation persists, call a physician. Wash contaminated clothing before re-use.

If swallowed, seek medical advice immediately and show this container or label. Do not induce vomiting.

If inhalation, remove to fresh air. If breathing is irregular or stopped, administer artificial respiration. Keep patient warm and at rest. Call a physician or Poison Information Centre immediately.

5. Fire-Fighting Measures

Extinguishing media: Foam, CO₂, or Dry chemical

Fire and explosion hazards: Foam fire extinguishing system is preferred because uncontrolled water can spread possible contamination. Toxic irritating gasses may be formed under fire conditions.

Fire-fighting equipment: Use positive-pressure, self-contained breathing apparatus and full protective equipment.

6. Accidental Release Measures

Action to take for spills: Sweep up small spills and/or wastes and place in a container suitable for disposal.

7. Handling and Storage

Precautions to be taken in handling and storage: Keep out of reach of children. Do not swallow. Avoid contact with eyes, skin, and clothing. Avoid breathing vapors and spray mist. Handle concentrate in ventilated area. Wash thoroughly with soap and water after handling and before eating, chewing gum, using tobacco, using the toilet or smoking. Keep away from food, feedstuffs, and water suppliers.

8. Exposure Controls/personal protection

Will irritate the eyes and skin, Avoid contact with eyes, if product in eyes, wash it out immediately with plenty of water. When opening the container and preparing spray wear,



cotton overalls buttoned to the neck and wrist (or equivalent clothing), elbow-length PVC gloves, air respirators or self-contained breathing apparatus.

9. Physical and Chemical Properties

Appearance: Light yellow viscous liquid

Odor: Pulp-like

pH Value: 5.0-8.0 (1% in water solution)

Suspensibility: $\geq 90.0\%$

Water content : $\leq 1.5\%$

Fineness (44 μm): $\geq 98\%$

10. Stability and Reactivity

Stability: Stable under normal use and storage.

Incompatibility: Reactivity but no significant rise in temperature for potassium permanganate.

Non- reactive toward monoammonium phosphate, zinc and water.

Hazardous decomposition products: Material is not impact sensitive. Exothermic decomposition initiating at 209 °C.

Hazardous polymerization: Not know not occur.

11. Toxicological Information

Acute oral toxicity: LD50 in rat: >5000 a.i.mg/kg

Acute dermal toxicity: LD50 in rat: >5000 a.i.mg/kg

Acute inhalation toxicity: LC50 in rat: 3.5 a.i.mg/L

Skin irritation: Non- irritating to skin (rabbits).

Eye irritation: Non- irritating eyes (rabbits).

Sensitization: Not a skin sensitiser (guinea pigs).

12. Ecological and Ecotoxicological Information

Effect on birds: low toxicity to birds, acute oral LD50 for *Colinus virginianus* is >2025 a.i.mg/kg.

Effect on fish: low toxicity to fish, acute 96 hour LC50 for *Oncorhynchus mykiss* is >100 a.i.mg/L.

Effect on aquatic invertebrates: moderate toxicity to aquatic invertebrates, acute 48 hour



ZHEJIANG RAYFULL CHEMICALS CO., LTD

Tel: +86-577-88905587,88908857

Fax: +86-577-88905567

EMAIL: info@rayfull.com sales@rayfull.com

EC50 for Daphnia magna is 98.3 a.i.mg/L.

Effect on algae: moderate toxicity to algae, acute 72 hour EC50 for Anabaena flos-aquae is 0.49 a.i.mg/L.

Effect on honeybees: low toxicity to honeybees, contact acute 48 hour LD50 is >100 a.i.µg/bee; Oral acute 48 hour LD50 is >100 a.i.µg/bee.

Effect on earthworms: low toxicity to earthworms, acute 14 day LC50 for Eisenia foetida is >1000 a.i.mg/kg.

13. Disposal Considerations

Must be dumped or incinerated in accordance with local regulations.

Contaminated packaging:

Packs that cannot be cleaned should be disposed of in the same manner as the contents.

Contaminated packaging should be emptied as far as possible and disposed of in accordance with official regulations after being thoroughly cleaned.

Uncontaminated packaging may be treated as household waste.

14. Transport Information

Not applicable

15. Regulatory Information

Not applicable

16. Other Information

All information and instructions provided in this Material Safety Data Sheet (MSDS) are based on the current state of scientific and technical knowledge at the date indicated on the present MSDS and are presented in good faith and believed to be correct. This information applies to the product as such. In case of new formulations or mixes, it is necessary to ascertain that a new danger will not appear. It is the responsibility of persons on receipt of this MSDS to ensure that the information contained herein is properly read and understood by all people who may use, handle, dispose or in any way come in contact with the product. If the recipient subsequently produce formulations containing this product, it is the recipients sole responsibility to ensure the transfer of all relevant information from this MSDS to their own MSDS.



ZHEJIANG RAYFULL CHEMICALS CO., LTD

Tel: +86-577-88905587,88908857

Fax: +86-577-88905567

EMAIL: info@rayfull.com sales@rayfull.com
