



## MATERIAL SAFETY DATA SHEET

### Manufacturer/information service:

ZHEJIANG RAYFULL CHEMICALS CO., LTD

ADD: NO.52 PUCHANG ROAD, PUZHOU INDUSTRIAL PARK, LONGWAN DISTRICT,  
WENZHOU ZHEJIANG P.R. CHINA

Tel: +86-577-88905587

Fax: +86-577-88905567

Email: info@rayfull.com

sales@rayfull.com

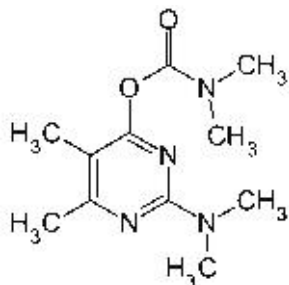
### 1. Chemical Product Identification

Product Name: Pirimicarb 95% TC

Molecular Formula: C<sub>11</sub>H<sub>18</sub>N<sub>4</sub>O<sub>2</sub>

Molecular Weight: 238.39 g/mol

Structural Formula:



Chemical Name: 2-dimethylamino-5,6-dimethylpyrimidin-4-yl dimethylcarbamate

Form: Powder

Color: White to light yellow

CAS No.: 23103-98-2

### 2. Composition / Information On Ingredients

Composition	CAS No.	Content %
Pirimicarb	23103-98-2	95.0
Other ingredients		5.0

### 3. Hazards Identification



---

#### Symptoms of Acute Exposure

Causes skin and eye irritation. May be fatal if swallowed.

This product is a cholinesterase inhibitor. Principal routes of exposure are skin contact and inhalation. Symptoms of cholinesterase inhibition may include salivation, sweating, headache, nausea, muscle twitching, tremors, poor coordination, blurred vision, tears, abdominal cramps, and diarrhea and chest discomfort.

Hazardous Decomposition Products: Can decompose at high temperatures forming toxic gases.

Unusual Fire, Explosion and Reactivity Hazards: During a fire, irritating and possibly toxic gases may be generated by thermal decomposition or combustion.

#### 4. First Aid Measures

**Skin:** If on skin or clothing: Take off contaminated clothing. Rinse skin immediately with plenty of water for 15- 20 minutes. Call a poison control center or doctor for treatment advice.

**Eyes:** If in eyes: Hold eye open and rinse slowly and gently with water for 15-20 minutes. Remove contact lenses, if present, after 5 minutes, then continue rinsing eye. Call a poison control center or doctor for treatment advice.

**Inhalation:** If inhaled: Move person to fresh air. If person is not breathing, call an ambulance, then give artificial respiration, preferably mouth-to-mouth if possible. Call a poison control center or doctor for further treatment advice.

**Ingestion:** If swallowed: Call a poison control center or doctor immediately for treatment advice. Have the person sip a glass of water if able to swallow. Do not induce vomiting unless told to do so after calling a poison control center or doctor. Do not give anything by mouth to an unconscious person.

Notes to physician: No specific antidote if ingested. Treat symptomatically.

#### 5. Fire-Fighting Measures

**Unusual Fire, Explosion and Reactivity Hazards:**

During a fire, irritating and possibly toxic gases may be generated by thermal decomposition or combustion.

**In Case of Fire:**



---

Use dry chemical, foam or CO<sub>2</sub> extinguishing media. Wear full protective clothing and self-contained breathing apparatus. Evacuate nonessential personnel from the area to prevent human exposure to fire, smoke, fumes or products combustion. Prevent use of contaminated buildings, area, and equipment until decontaminated. Water runoff can cause environmental damage. If water is used to fight fire, dike and collect runoff.

## **6. Accidental Release Measures**

### **In Case of Spill or Leak**

Control the spill at its source. Contain the spill to prevent it from spreading, contaminating soil, or entering sewage and drainage systems or any body of water. Clean up spills immediately, observing precautions outlined in Section 8. If a solid, sweep up material and place in a compatible disposal container. If a liquid, cover entire spill with absorbing material and place into compatible disposal container. Scrub area with hard water detergent (e.g. commercial products such as Tide, Joy, Spic and Span). Pick up wash liquid with additional absorbent and place into compatible disposal container. Once all material is cleaned up and placed in a disposal container, seal container and arrange for disposition.

## **7. Handling And Storage**

Store the material in a well-ventilated, secure area out of reach of children and domestic animals. Do not store food, beverages or tobacco products in the storage area. Prevent eating, drinking, tobacco use, and cosmetic application in areas where there is a potential for exposure to the material. Wash thoroughly with soap and water after handling.

## **8. Exposure Controls / Personal Protection**

Personal protective equipment

Respiratory protection: Approved respirator.

Protective gloves: Rubber gloves.

Eye protection: Safety goggles or face shield.

Industrial hygiene: adequate ventilation.

## **9. Physical And Chemical Properties**

Appearance: White to light yellow powder

Melting point: 90.5-91.6°C



---

Density: 1.21 g/ml

Moisture:  $\leq 1.0\%$

Alkaline:  $\leq 0.3\%$

Acetone Insoluble:  $\leq 0.4\%$

## 10. Stability And Reactivity

Stability: Stable under normal use and storage conditions.

Hazardous Polymerization: Will not occur.

Conditions to Avoid: None known.

Materials to Avoid: Oxidizing agents.

Hazardous Decomposition Products: Can decompose at high temperatures forming toxic gases.

## 11. Toxicological Information

Acute oral LD<sub>50</sub> for rats is >142 a.i.mg/kg.

Acute percutaneous LD<sub>50</sub> for rabbits is >2000 a.i.mg/kg.

Acute inhalation toxicity LC<sub>50</sub> (4 h) for rats is 0.86 a.i.mg/l.

Skin irritation: Non-irritating to skin (rabbits).

Eye irritation: Non-irritating to eyes (rabbits).

Skin sensitization for guinea pig: Not a skin sensitiser.

## 12. Ecological And Ecotoxicological Information

Effect on birds: Acute oral LD<sub>50</sub> for Bobwhite quail is 20.9 a.i.mg/kg.

Effect on fish: Acute LC<sub>50</sub> (96 h) for Rainbow trout is <18 a.i.mg/l.

Effects on aquatic invertebrates: Acute EC<sub>50</sub> (48 h) for Daphnia magna is 40 a.i.mg/l.

Effects on algae: Acute EC<sub>50</sub> (72 h) for Scenedesmus quadricauda is 0.017 a.i.mg/l.

Effects on bees: Contact acute (48h) LD<sub>50</sub> is 53.1 a.i.µg/bee, Oral acute (48 h) LD<sub>50</sub> is 4.0 a.i.µg/bee.

Effects on earthworms: Acute 14 day LC<sub>50</sub> is >60 a.i.mg/kg.

## 13. Disposal Considerations

Do not reuse product containers. Dispose of product containers, waste containers, and residues according to local, state, and federal health and environmental regulations.



**14. Transport Information**

Not applicable

**15. Regulatory Information**

Not applicable

**16. Other Information**

All information and instructions provided in this Material Safety Data Sheet (MSDS) are based on the current state of scientific and technical knowledge at the date indicated on the present MSDS and are presented in good faith and believed to be correct. This information applies to the product as such. In case of new formulations or mixes, it is necessary to ascertain that a new danger will not appear. It is the responsibility of persons on receipt of this MSDS to ensure that the information contained herein is properly read and understood by all people who may use, handle, dispose or in any way come in contact with the product. If the recipient subsequently produce formulations containing this product, it is the recipients sole responsibility to ensure the transfer of all relevant information from this MSDS to their own MSDS.