



## MATERIAL SAFETY DATA SHEET

### Manufacturer/information service:

ZHEJIANG RAYFULL CHEMICALS CO., LTD

ADD: NO.52 PUCHANG ROAD, PUZHOU INDUSTRIAL PARK, LONGWAN DISTRICT,  
WENZHOU ZHEJIANG P.R. CHINA

Tel: +86-577-88905587

Fax: +86-577-88905567

Email: info@rayfull.com

sales@rayfull.com

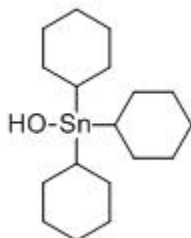
### 1. Chemical Product Identification

Product Name: Cyhexatin 95% TC

Molecular Formula: C<sub>18</sub>H<sub>34</sub>OSn

Molecular Weight: 385.17 g/mol

Structural Formula:



Chemical Name: tricyclohexyltin hydroxide

Form: Powder

Color: White

Odor: Faint fragrance

CAS No.: 13121-70-5

### 2. Composition / Information On Ingredients

Composition	CAS No.	Content %
Cyhexatin	13121-70-5	95.0
Other ingredients		5.0

### 3. Hazards Identification



# ZHEJIANG RAYFULL CHEMICALS CO., LTD

Tel: +86-577-88905587,88908857

Fax: +86-577-88905567

EMAIL: info@rayfull.com sales@rayfull.com

Component	Sympl	R phrases
Cyhexatin	T	R 36/3748

More important danger for the man: absorb plenty of the pesticide, may injury CNS.

Dangers for the enviroment: be toxic to aquatic.

Physical-chemical dangers: not applicable.

## 4. First Aid Measures

Skin: wash with soap and water.

Eyes: flush with plenty of water for at least 15 minutes. See medical attention if irritation develops or persists.

Inhalation: move to fresh air. Do not breath spray mist.

Ingestion: Call physician/poison control center immediately.

## 5. Fire-Fighting Measures

Extinguishing media

To be used: dry chemical, foam, carbon dioxide.

Don't use: not applicable

Particular risk: not applicable

Measures of personal protection: safety glasses or goggles, rubber gloves, shoes plus socks, long-sleeved shirt, and long pants.

Environmental cautions

EX: prevent the contamination of the floor and of beds of water.

## 6. Accidental Release Measures

Personal cautions: safety glasses or goggles, rubber gloves, shoes plus socks, long-sleeved shirt, and long pants.

Cleaning methods

EX: pick up for sweeping or asplation avoiding the powder formation. Transfer to a properly labeled deposit that will be closed and sealed until the recovery of climination of the product.

Environmental cautions

EX: prevent the contamination of the floor and of beds of water.

## 7. Handling And Storage



# ZHEJIANG RAYFULL CHEMICALS CO., LTD

Tel: +86-577-88905587,88908857

Fax: +86-577-88905567

EMAIL: info@rayfull.com sales@rayfull.com

Handling: do not apply to humans, their clothing, or bedding. Do not contaminate food or use on household tanks.

Storage:

Technical protective measures: store in original container only in cool, dry, well-ventilated, secure area out of reach of children and animals.

## 8. Exposure Controls / Personal Protection

These precautions are suggested for conditions where the potential for exposure exists.

Emergency conditions may require additional precautions.

Skin protection: use gloves chemically resistant to this material when prolonged or frequently repeated contact could occur.

Work/Hygienic/Maintenance Practices: Wash hands thoroughly with soap and water after handling and before eating, drinking smoking or using restroom.

## 9. Physical And Chemical Properties

Form: Powder

Color: White

Odor: Faint fragrance

pH: 7.0-9.0

Loss on drying:  $\leq 1.0\%$

Vapour pressure:  $1.15 \times 10^{-3}$  mPa at 25°C

## 10. Stability And Reactivity

Conditions to avoid: acid and light

Products to avoid: acid pesticide

Hazardous decomposition products: not applicable

Hazardous reaction: not applicable

## 11. Toxicological Information

Acute oral LD<sub>50</sub> for for males rats is 407 a.i.mg/kg, for females rats is 265 a.i.mg/kg.

Acute dermal LD<sub>50</sub> for males rats is 7600 a.i.mg/kg, for females rats is 3600 a.i.mg/kg.

Acute inhalatio LC<sub>50</sub> (4 h) for rat: 0.016 a.i.mg/L.

Skin irritation: irritating to skin (rabbits).



---

Eye irritation: Highly irritating to eyes (rabbits).

Skin sensitization: Weakly sensitizing (guinea pigs).

## 12. Ecological And Ecotoxicological Information

Effect on birds: Acute oral LD<sub>50</sub> for Bobwhite quail is 520 a.i.mg/kg.

Effect on fish: Acute LC<sub>50</sub> (96 h) for Perciformes is 0.06 a.i.mg/l.

Effects on aquatic invertebrates: Acute EC<sub>50</sub> (48 h) for Daphnia magna is 0.0002 a.i.mg/l.

Effects on algae: Acute 72 hour EC<sub>50</sub> for Scenedesmus subspicatus is 0.000018 a.i.mg/l.

Effects on bees: Contact acute (48 h) LD<sub>50</sub> is 32 a.i.µg/bee.

## 13. Disposal Considerations

Product: dispose of in compliance with all state and local laws and regulation.

## 14. Transport Information

Not applicable

## 15. Regulatory Information

Not applicable

## 16. Other Information

All information and instructions provided in this Material Safety Data Sheet (MSDS) are based on the current state of scientific and technical knowledge at the date indicated on the present MSDS and are presented in good faith and believed to be correct. This information applies to the product as such. In case of new formulations or mixes, it is necessary to ascertain that a new danger will not appear. It is the responsibility of persons on receipt of this MSDS to ensure that the information contained herein is properly read and understood by all people who may use, handle, dispose or in any way come in contact with the product. If the recipient subsequently produce formulations containing this product, it is the recipients sole responsibility to ensure the transfer of all relevant information from this MSDS to their own MSDS.