



MATERIAL SAFETY DATA SHEET

Manufacturer/information service:

ZHEJIANG RAYFULL CHEMICALS CO., LTD.

ADD: NO.52 PUCHANG ROAD, PUZHOU INDUSTRIAL PARK, LONGWAN DISTRICT,
WENZHOU ZHEJIANG P.R. CHINA

Tel: +86-577-88905587

Fax: +86-577-88905567

Email: info@rayfull.com sales@rayfull.com

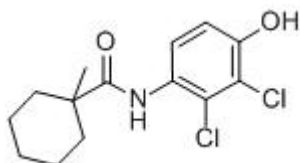
1. Chemical Product Identification

Product Name: Fenhexamid 50% WG

Molecular Formula: C₁₄H₁₇Cl₂NO₂

Molecular Weight: 302.20 g/mol

Structural Formula:



Chemical Name: 2',3'-dichloro-4'-hydroxy-1-methylcyclohexanecarboxanilide

Form: Granule

Color: Beige

Odor: Wake, not characteristic

CAS No.: 126833-17-8

2. Composition / Information on Ingredients

Composition	CAS No.	Content %
Fenhexamid	126833-17-8	50.0
Other ingredients		50.0

3. Hazards Identification

Inhalation: Toxic if inhaled. Material may be irritating to mucous membranes and upper



respiratory tract.

Skin: May cause skin irritation. May be harmful if absorbed through the skin.

Eyes: May cause eye irritation.

Ingestion: May be harmful if swallowed.

Hazards: Emits toxic fumes under fire conditions.

4. First Aid Measures

Skin: In case of skin contact, flush with copious amounts of water for at least 15 minutes.

Remove contaminated clothing and shoes. Call a physician.

Eyes: In case of contact with eyes, flush with copious amounts of water for at least 15 minutes. Assure adequate flushing by separating the eyelids with fingers. Call a physician.

Ingestion: If swallowed, wash out mouth with water provided person is conscious. Call a physician immediately.

Inhalation: If inhaled, remove to fresh air. If not breathing give artificial respiration. If breathing is difficult, give oxygen.

5. Fire-Fighting Measures

Extinguishing Media: If product is involved in fire, use CO₂ or dry chemical.

Fire And Explosion Hazards: Heating benefin to temperatures above 90°C (194°F) can lead to violent reaction with rapid pressure build-up. If product is involved in fire, noxious, toxic fumes may also be formed.

Fire-Fighting Equipment: Wear full protective clothing and use positive- pressure, self-contained breathing apparatus.

6. Accidental Release Measures

Personal precautions, protective equipment and emergency procedures

Wear respiratory protection. Avoid dust formation. Avoid breathing vapours, mist or gas. Ensure adequate ventilation. Evacuate personnel to safe areas. Avoid breathing dust. For personal protection see section 8.

Environmental precautions

Prevent further leakage or spillage if safe to do so. Do not let product enter drains. Discharge into the environment must be avoided.

Methods and materials for containment and cleaning up



Pick up and arrange disposal without creating dust. Sweep up and shovel. Keep in suitable, closed containers for disposal.

Reference to other sections

For disposal see section 13.

7. Handling and Storage

Handling: Keep exposure to this product to a minimum, and minimise the quantities kept in work areas. Check Section 8 of this SDS for details of personal protective measures, and make sure that those measures are followed. The measures detailed below under "Storage" should be followed during handling in order to minimise risks to persons using the product in the workplace. Also, avoid contact or contamination of product with incompatible materials listed in Section 10.

Storage: Keep out of reach of children. Observe all relevant regulations regarding sale, transport and storage of this schedule of poison. Store in a cool, well ventilated area, in the original container. Check containers periodically for leaks

8. Exposure Controls/Personal Protection

Personal Protection: Compatible chemical-resistant gloves. Chemical safety goggles.

Respirators: Government approved respirator.

Exposure Effects: Properties of this material have not yet been prepared. Any recommendations are of a general nature. Many chemicals cause irritation of the eyes, skin, and respiratory tract. In severe cases respiratory tract irritation can progress to ARDS/acute lung injury which may be delayed in onset for up to 24 to 72 hours in some cases Irritation or burns of the esophagus or gastrointestinal tract are also possible if caustic or irritant chemicals are ingested. ALWAYS contact your local poison control authority or medical professional for assistance.

9. Physical and Chemical Properties

Appearance : Beige Granule

Solubility in water: 24 mg/l at 20°C

Melting point: <153°C

Vapor pressure: 4×10^{-7} Pa at 20°C

Flash point: Not highly flammable



10. Stability and Reactivity

Stability: Stable at normal temperatures and pressures.

Incompatibilities: Strong oxidizing agents.

Decomposition: Carbon monoxide, Carbon dioxide, Nitrogen oxides.

Combustion Products: Fire may produce irritating, corrosive and/or toxic gases.

11. Toxicological Information

Acute oral LD50 for rats is >5000 mg/kg.

Acute dermal LD50 for rats is >5000 mg/kg.

Acute inhalation toxicity LC50 (4 h) for rats is >5.1 mg/L.

Skin irritation: Non-irritating to skin (rabbits).

Eye irritation: Non-irritating to eyes (rabbits).

Skin sensitization for guinea pig: Not a skin sensitizer.

12. Ecological And Ecotoxicological Information

Effect on birds: Acute oral LD50 for Bobwhite quail is >804.4 mg/kg.

Effect on fish: Acute LC50 (96 h) for Rainbow trout is 1.34 mg/l.

Effects on aquatic invertebrates: Acute EC50 (48 h) for Daphnia magna is >18.8 mg/l.

Effects on algae: Acute 72 hour EC50 for Scenedesmus subcapitata is >26.1 mg/l.

Effects on bees: contact acute 48 hour LD50 is >200 µg/bee, oral acute 48 hour LD50 is >102.07 µg/bee.

Effects on earthworms: Acute 14 day LC50 is >500 mg/kg.

13. Disposal Considerations

This product should not be allowed to enter drains, water courses or the soil. Do not contaminate ponds, waterways or ditches with chemical or used containers. Triple or preferable pressure rinse containers before disposal. Add rinsings to the mixing tank. Do not dispose of undiluted chemical onsite. If recycling, replace cap and return clean containers to recycler or designated collection point. If not recycling, break, crush or puncture and bury empty containers in a local authority landfill. If no landfill is available bury the containers below 500mm in a disposal pit specifically marked and set up for this purpose clear of waterways, desirable vegetation and tree roots. Empty containers and product should not be



burnt.

14. Transport information

Not Applicable

15. Regulatory Information

Not Applicable

16. Other Information

All information and instructions provided in this Material Safety Data Sheet (MSDS) are based on the current state of scientific and technical knowledge at the date indicated on the present MSDS and are presented in good faith and believed to be correct. This information applies to the product as such. In case of new formulations or mixes, it is necessary to ascertain that a new danger will not appear. It is the responsibility of persons on receipt of this MSDS to ensure that the information contained herein is properly read and understood by all people who may use, handle, dispose or in any way come in contact with the product. If the recipient subsequently produce formulations containing this product, it is the recipients sole responsibility to ensure the transfer of all relevant information from this MSDS to their own MSDS.